

EMERGENCY INFORMATION

Facebook Page: Haida Gwaii ROCKS
Emergency Plan!

Radio: CFNR 97.1 FM

Emergency Management BC:
www.embc.gov.bc.ca

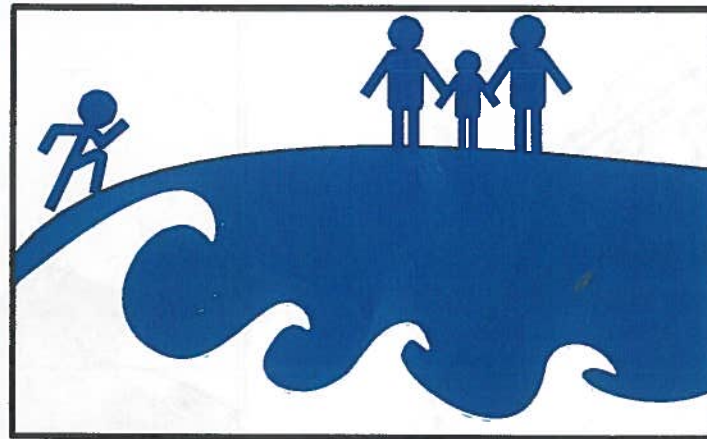
Village of Masset
www.massetbc.com

HOW TO USE THE PLANNING MAP:

- 1 Use the map on the reverse side of this brochure to locate your home and determine if you are in the Tsunami Hazard Zone.
- 2 If your home is outside of the Tsunami Hazard Zone, be prepared to receive neighbours in need of shelter.
- 3 If your home is in the Tsunami Hazard Zone use the map to locate an Assembly Area or open area outside of the Tsunami Hazard Zone where you can gather with others to receive further information.
- 4 Identify the route you would walk to reach safety from your home or workplace.
- 5 Discuss the Tsunami Hazard with your family and co-workers. Everyone should know what to do when a Tsunami follows a major earthquake.

TSUNAMI EVACUATION MAP

Greater Masset Area



IF YOU FEEL AN EARTH- QUAKE:

1. PROTECT YOURSELF: DROP, COVER, HOLD—UNTIL THE EARTHQUAKE IS OVER
2. MOVE QUICKLY INLAND TO HIGH GROUND AND AWAY FROM LOW-LYING AREAS— GO ON FOOT IF AT ALL POSSIBLE
3. DO NOT WAIT FOR AN OFFICIAL WARNING
4. DO NOT PACK OR DELAY
5. DO NOT RETURN TO SHORE
6. WAIT FOR AN “ALL CLEAR” FROM LOCAL OFFICIALS BEFORE RETURNING TO LOW-LYING AREAS.

A TSUNAMI MAY BE COMING IN A FEW MINUTES, MORE WAVES MAY ARRIVE SEVERAL HOURS AFTER THE FIRST WAVE!

TSUNAMI EVACUATION MAP: WHAT TO KNOW AND WHAT TO DO ABOUT TSUNAMIS

A Tsunami is a series of sea waves usually caused by a displacement of the ocean floor by an undersea earthquake.

We distinguish between a Tsunami caused by an undersea earthquake near the coast (**LOCAL TSUNAMI**) and an undersea earthquake far away from the coast (**DISTANT TSUNAMI**).

A **LOCAL TSUNAMI** could come onshore within minutes after the earthquake. There may not be an official warning. **Ground shaking could be the only warning you have. Evacuate quickly!**

A **DISTANT TSUNAMI** may take hours to come ashore and will generate a **TSUNAMI WATCH**, **TSUNAMI ADVISORY** and/or a **TSUNAMI WARNING**.

- **TSUNAMI WATCH:** Prepare to evacuate to the Tsunami Safe Zone.
- **TSUNAMI ADVISORY:** The potential to generate strong currents or waves dangerous to those near the water is imminent, expected, or occurring. The threat may continue for several hours after initial arrival, but significant inundation is not expected for areas under an advisory. Appropriate actions to be taken by local officials may include closing beaches and evacuating harbours and marinas.
- **TSUNAMI WARNING:** Evacuate immediately to the Tsunami Safe Zone as shown on the back of this brochure. People located within the Tsunami Hazard Zone will be notified by sirens, emergency vehicles and door to door notifications if possible.

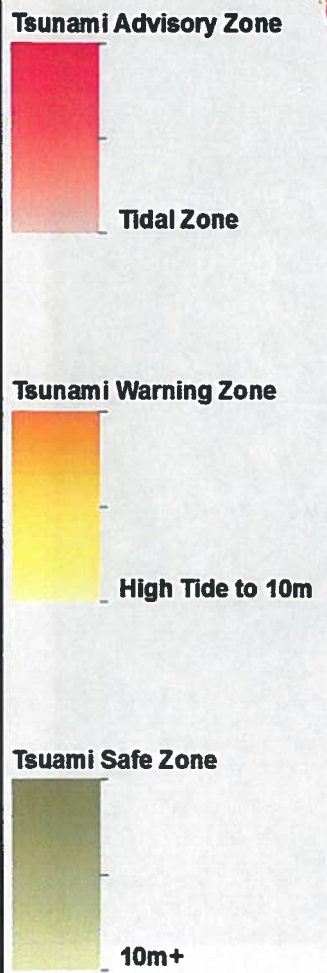
FOR BOTH DISTANT AND LOCAL TSUNAMIS:

- 1 Evacuate on foot if possible because of potential traffic jams.
- 2 Stay away from potentially hazardous areas until you receive an **ALL CLEAR** from officials. Officials must inspect all flooded or earthquake-damaged structures before anyone can go back into them.
- 3 In the event of a local earthquake and tsunami, it is unlikely that anyone will be available to help you, so **MAKE A PLAN AND BE PREPARED!**



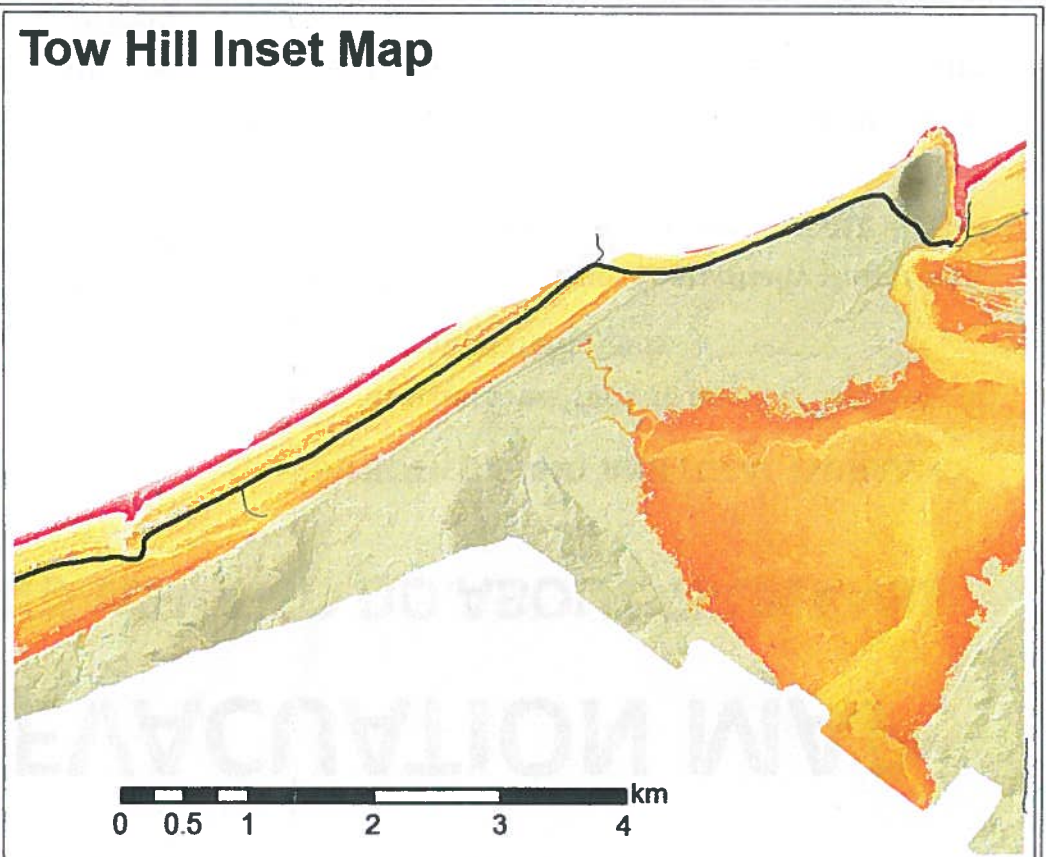
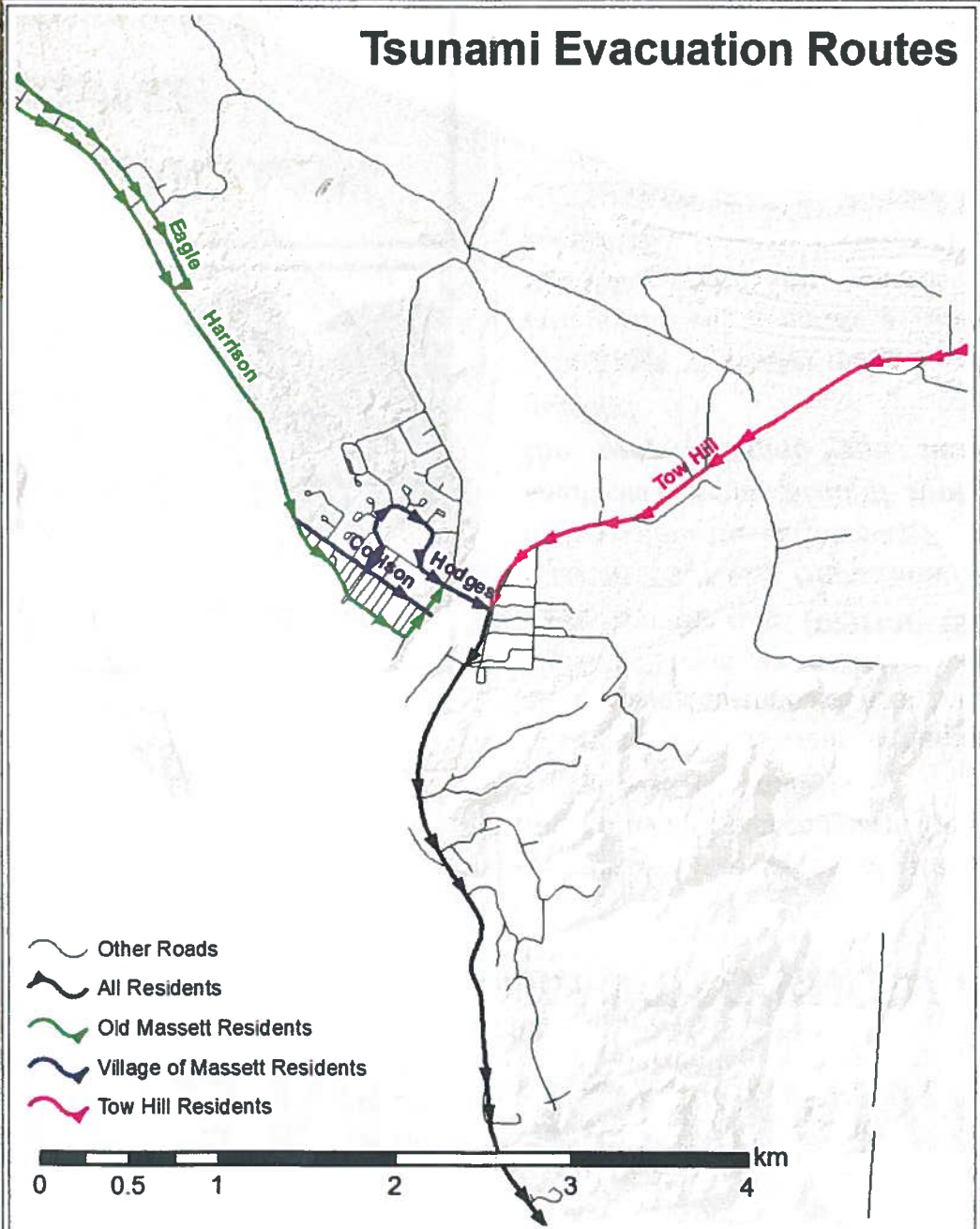
IF YOU OBSERVE THE SEA LEVEL BEGINNING TO RISE STEADILY , OR DROP SO MUCH THAT THE SEA FLOOR IS EXPOSED, A TSUNAMI IS COMING VERY SOON. WARN OTHERS AROUND YOU AND SEEK HIGH GROUND IMMEDIATELY!

Greater Massett Tsunami Evacuation Map



This map was produced using the EMBC Recommended Tsunami Planning Levels. Another 4m elevation was added to that to make the safe zone at 10m+.

Note* As per RCMP guidelines only one lane will be used for evacuation traffic. Use of both lanes for evacuating is PROHIBITED.



Emergency Services Vehicle Staging Area (Deep Creek Hill)

Tsunami Evacuation Site (Gravel Pit)

© January 2014 Print date: 2014 January 23
Produced By: Owen J. Haida Mapping
This map is a work in progress and is produced solely for the purposes of Land/Manne Use Planning. The CHN has not verified that all the facts and/or opinions expressed on the map are accurate.

Coordinate System: NAD 1983 UTM Zone 9N

LIDAR Acknowledgements:
Ian J. Walker
Assistant Professor
Department of Geography
University of Victoria

CGIAP-NRCan
Project A580

0 500 1,000 2,000 3,000 4,000 Meters